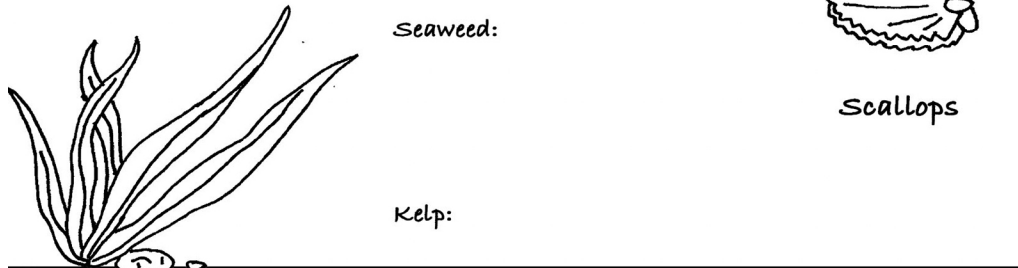


(Benthic- Zone)

All of the the Sea Floor is called the 'Benthic Zone', regardless of *Ocean Layer*, Light availability, Sediment Type, or Substrate.

Relatives that depend on photosynthesis can only grow in Benthic regions we call the 'Sunlight Zone'. This includes plants and some animals!



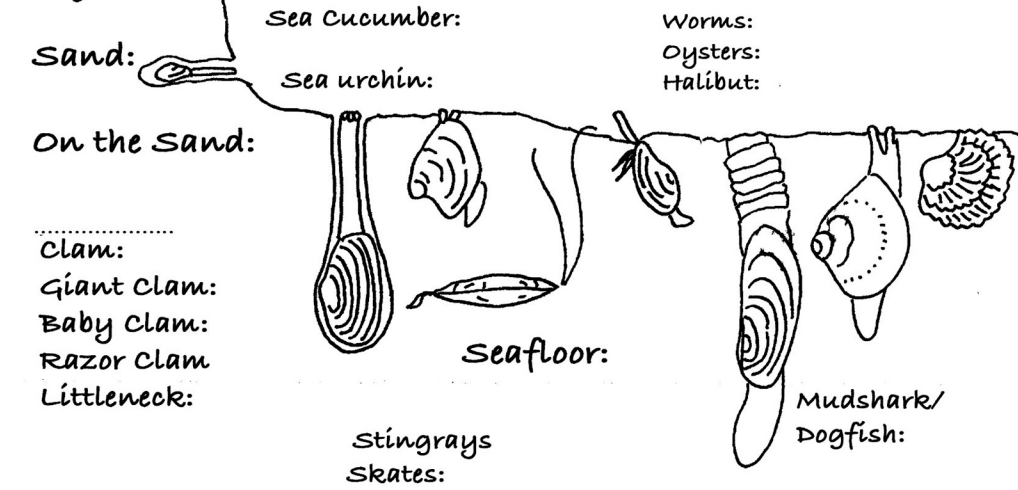
Seaweed:



Scallops

Kelp:

Organisms that live on the ocean floor are called "Benthos"
 These Relatives are reliant on "Marine Snow" (food particles from dead organisms) falling from the ocean layers above them.



Sand:

Sea cucumber:

Worms:

Oysters:

Halibut:

Sea urchin:

On the sand:

Sea floor:

- Clam:
- Giant Clam:
- Baby Clam:
- Razor Clam
- Littleneck:

Stingrays
Skates:

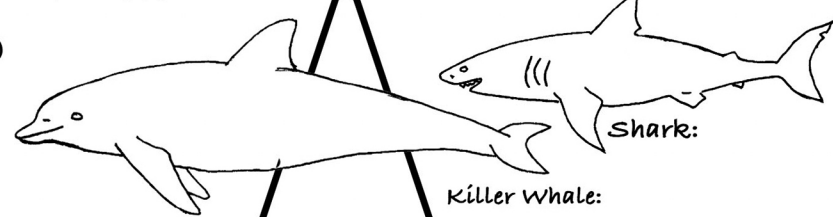
Mudshark/
Dogfish:

The Trophic Cascade Model

6) Top Carnivores

(Dolphin)

Sperm Whales:



Shark:

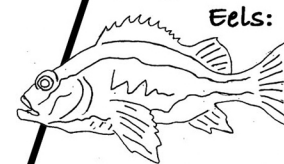
Eagle:

Killer Whale:

5) (3rd Level) Carnivorous Consumers

(Larger Fish)

Octopus:



Rockfish:

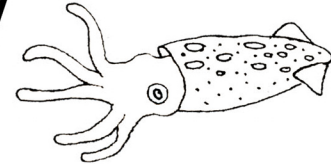
Salmon:

Halibut:

4) (2nd Level) Carnivorous Consumers

(Smaller Fish)

Small Squid:



Shore-Birds:

Herring:

Some Crabs:

3) (1st Level) Carnivorous Consumers

(Juvenile Fish)

Fry:



(Crustations)

Crabs:

Minnow:

Shrimp:

(Sea Stars)

"Grazers"

2) Herbivorous Consumers

"Filter-Feeders"

Periwinkle:

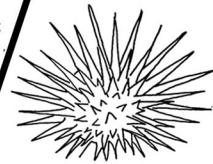
(Zooplankton)

Barnacles:

Urchins:

(Cockles)

Mussels:



1) Primary Producers: (Phytoplankton) (Seaweed:) (Kelp:) Alga ().

